



SIXTH FORM CENTRE GETS COUNCIL GO AHEAD



Ambitious plans for Putney High School's state-of-the-art new Sixth Form Centre have been given the go ahead.

From the Headmistress:

Wandsworth Borough Council planners have given permission for the building, which we hope will be ready to use early in 2012.

The new centre will be a purpose-built, three storey building which we are planning to provide a new benchmark for sixth form development.

Our intention is to create outstanding facilities including a cutting edge cyber café and rooftop terrace. A key design element is to provide versatile spaces, ensuring large work areas for arts projects, exhibitions and performances, for example.

Solar roof panels are planned, to ensure the school meets its environmental responsibilities and leads by example. Indeed, the new building has been designed to achieve a Building Research Establishment Environmental Assessment Method energy efficiency rating of 'Very Good'.

The project represents an exciting new chapter for the school and we are working closely with our whole community to deliver the very best for them. Throughout, we are listening to the thoughts and ideas of staff, governors, parents and most importantly, our girls.

Dr Denise V Lodge

Here we try to answer the questions you may have. We will of course continue to keep you fully updated as the project progresses.

When will work begin?

Preliminary work is expected to start this May although actual demolition will take place outside term time, in the summer holidays. This will minimise noise, dust and other disruption.

The project is expected to last four terms. Throughout this time, the site will be sealed off and separated from the rest of the school.

Won't the noise have an impact on learning?

No. The noisiest work will be taking place outside term time, during the summer. Where necessary, lessons will be relocated into other classrooms further from the small area affected by the work.

When will the temporary sixth form centre be installed?

Over the summer holidays. From September, the sixth form will be housed in 'The Village' – comfortable and spacious temporary accommodation which will be sited on the rounders' pitch.

It will offer a kitchen, common room, several sixth form teaching rooms and quiet work space. The accommodation offers full wireless network access, enabling girls greater freedom in their studies. The centre provides no less floor space than girls have at present. *Full details of The Village can be found on the back page.*

To what extent will sport be disrupted?

It won't. All PE lessons will continue as usual. Some lessons may take place in alternative locations.

To what extent will Art be affected?

One classroom will be relocated. It will be of similar size to the existing room and will be equipped with the same facilities.

Won't there be congestion at the start and end of the school day?

Senior girls will continue to use the entrance on Putney Hill while Junior Department girls will continue to have their own dedicated entrance on Lytton Grove.

To what extent will traffic be disrupted in surrounding roads?

As a 'good neighbour' we are committed to minimising any disruption. For example, we are working closely with Barratt to manage the flow of traffic to both the school and their development opposite us, on the site of the former South Thames College.

Will we still be able to park to drop off and collect?

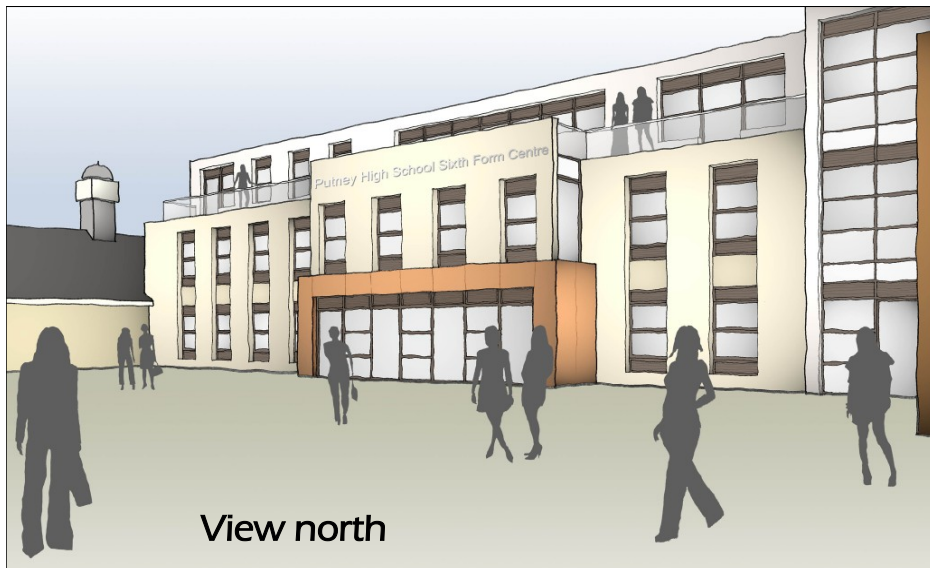
Parking in Lytton Grove and the surrounding area is not expected to be affected.

How will you manage an extra Year 7 class as well as a building project?

The school has sufficient capacity to deliver an outstanding education to all its girls. At any time during the school day, there are always be free classrooms available.



Front elevation



View north



View south

From the Head of Sixth Form



Head of Sixth Form, Ms Ellis, with *SixthForm Consulting* representatives

***SixthForm Consulting*, comprising Form Representatives from Year 9 to Year 13, has been set up and meets every Friday morning to discuss aspects of the Sixth Form build, chaired by the Head of Sixth Form.**

The girls' views are very important and their input and feedback has been sought on the key areas.

Areas discussed include

- **Temporary accommodation**
- **Catering facilities – including the Sixth Form Diner on the top floor and the Internet Café in the main entrance.**
- **Designing sixth form classrooms for the future.**
- **Sustainability and environmental issues**

The girls have also met with the architect in charge of the building programme and they have been able to put questions directly to her. At each of these meetings the consulting group has proposed a list of requirements which has been fed back to the architect. Several girls have commented that the "new building will be so luxurious that they are worried that they won't actually get any work done!" Just to put your mind at rest, we did draw a line at the request for a Jacuzzi on the roof terrace.

One key aim of the sixth form building project is to design a sixth form centre for the future. Thus with the help of the *SixthForm Consulting* we are trying to think creatively and innovatively. We have visited several other sixth form centres to investigate and spoken to many industry experts in sixth form design.

At the same time we are adamant that the temporary accommodation should offer all the facilities that the sixth form currently enjoy. We have looked at several designs and have been very impressed with the quality of temporary accommodation on offer.

By the end of August 2010, our Sixth Form Village will be *in situ* and ready for the start of the Autumn Term. The temporary accommodation will include a common room, a large work room, internet access with new laptops, kitchen facilities, 3 classrooms (to replace the classrooms that are currently situated in the sixth form centre) and locker storage facilities for the girls. All other sixth form tutorial rooms and teaching rooms will continue to be taught in their existing classrooms without disruption.

Sixth Form Consulting continues to meet weekly to discuss ideas for the new development and answer questions that girls have gathered from their forms; these are exciting times!