



Putney Highlights

SIXTH FORM CENTRE SPECIAL

Volume 1
Issue 2
Summer
2010



From the Headmistress

Work is proceeding well with our new Sixth Form Centre. Contractors have been preparing the site, ready for the main demolition work which will take place during the summer holidays.



From September, the Sixth Form will be housed in 'The Village' – comfortable and spacious temporary accommodation which is being sited on the rounders' pitch. This provides a kitchen, common room, several sixth form teaching rooms and quiet work space.



There will be full wireless network access, enabling girls' to have greater freedom in their studies. **We are delighted to have been able to incorporate all requests from girls when planning this new accommodation.**

Denise V. Lodge

We continue to try to keep you fully updated and here we answer some of your questions.

Will the Junior Department girls lose all of its outdoor play space?

No. It is inevitable that a project of this significance will have some impact across the whole school – just as building work to improve the Junior Department did have some impact on the Senior Department. However, we are working hard to ensure any disruption is kept to an absolute minimum.

For example, we are planning for PE games lessons to take place off site, leaving the tennis courts free for the Junior Department during break and lunchtimes. The rounders' pitch will not be available; however, this space has only ever been available to girls in the summer term because of the effects of many feet churning up the grass at other times.

The Junior Department will continue to enjoy its wonderful outdoor play equipment. In fact, such is our commitment that outdoor learning, play and an enhanced recreational environment for the whole school will be one of our priorities for the next Annual Fund, which launches in September.

How will parking be affected?

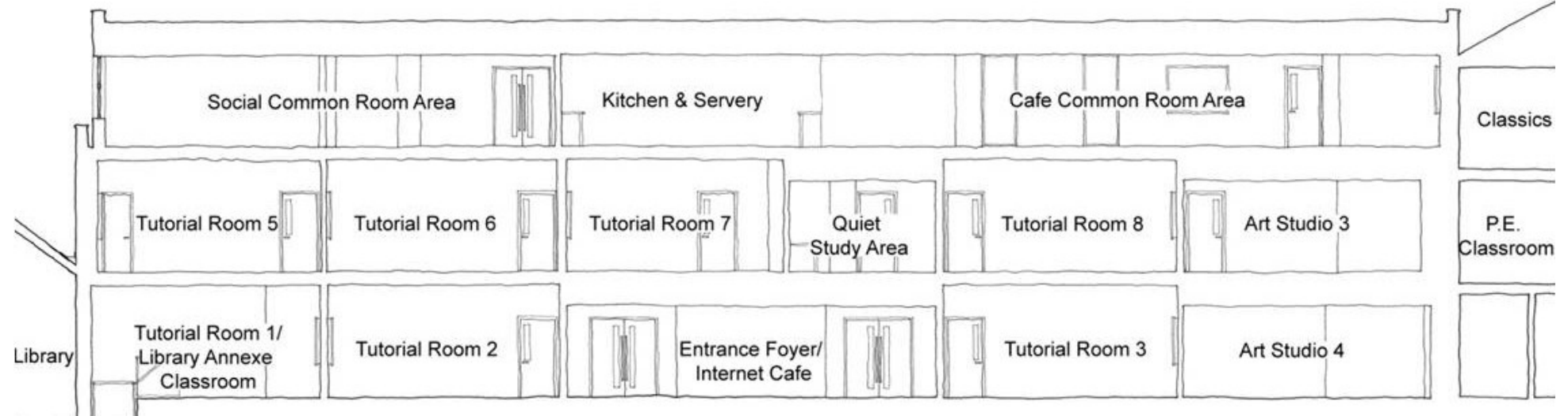
Parking in Lytton Grove and the surrounding area should not be affected. However, there will be very limited parking on the school site. We are currently working with staff to find alternative methods of transport for them. Similarly, visitor parking will be extremely limited and as always, parents are not able to park on the school site.

Will girls be able to bring their cycles to school?

Yes. There will remain ample room to park cycles at school. However, the cycle stand outside the Homefield Music Department is no longer in use as it forms part of the construction site.



Putney High School Sixth Form Centre—cross section and key to proposed development from Putney Hill, looking east.



From the Head of Sixth Form

A new term brought together a new group of representatives to the *SixthForm Consulting* meetings. New girls and some new ideas! We hope that over the next few months all girls who wish to be involved in the consultation will have an opportunity to have their voices heard.

We have recently presented the final plan for the temporary accommodation that you can see in this newsletter. It is really exciting to see it on paper as they have managed to incorporate all of the girls' requests; with more space available to them than they had in their 'old' common room! We look forward to seeing it brought onto site during the summer holiday when we hope some Sixth Formers may be available to select art work for each of the areas to make it more homely.

ICT requirements are being finalised over the next few weeks and the new building is being planned to be as 'future-proof' as possible in terms of ICT facilities available – it is going to be wonderful.

I look forward to updating you further in the next academic year when we will have news of the demolition and the laying of the foundations – looking forward to a Sixth Form Building the girls will love.

Miss Suzie Ellis
Head of Sixth Form

On the eve of the demolition of our Sixth Form Centre, we look back at its history.



1930—the Old Studio and the Long Corridor before the Sixth Form block was conceived.



1960 –Miss Lockley proudly shows off the new Sixth Form building and Art Studio



2010 - The Sixth Form Centre to be demolished this summer.